



PRODUCT INFO

AFI - Automatic Foam Injector

For reliable and reproducible cleaning processes **LOEHRKE AFI** is the perfect choice. This equipment generates fully automatically the required cleaning medium for each cleaning step. The dosing is carried out proportional to the volume of fresh water. The system provides also pressure increased rinse water.

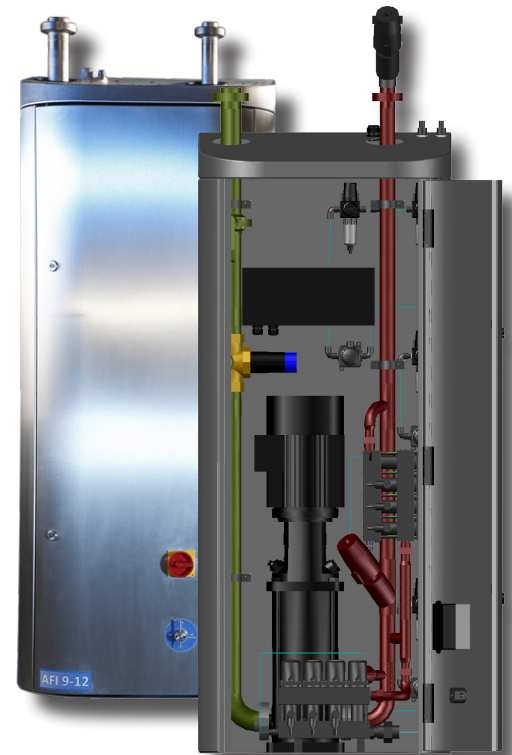
Due to the patented “wide range injector system” **LOEHRKE AFI** offers an expanded area of operation. The exact concentration of cleaning chemicals management works reliably even at unsteady water flow ($\pm 15\%$).

The system is suitable for wall mounting and pre-mounted on a stainless steel console available.

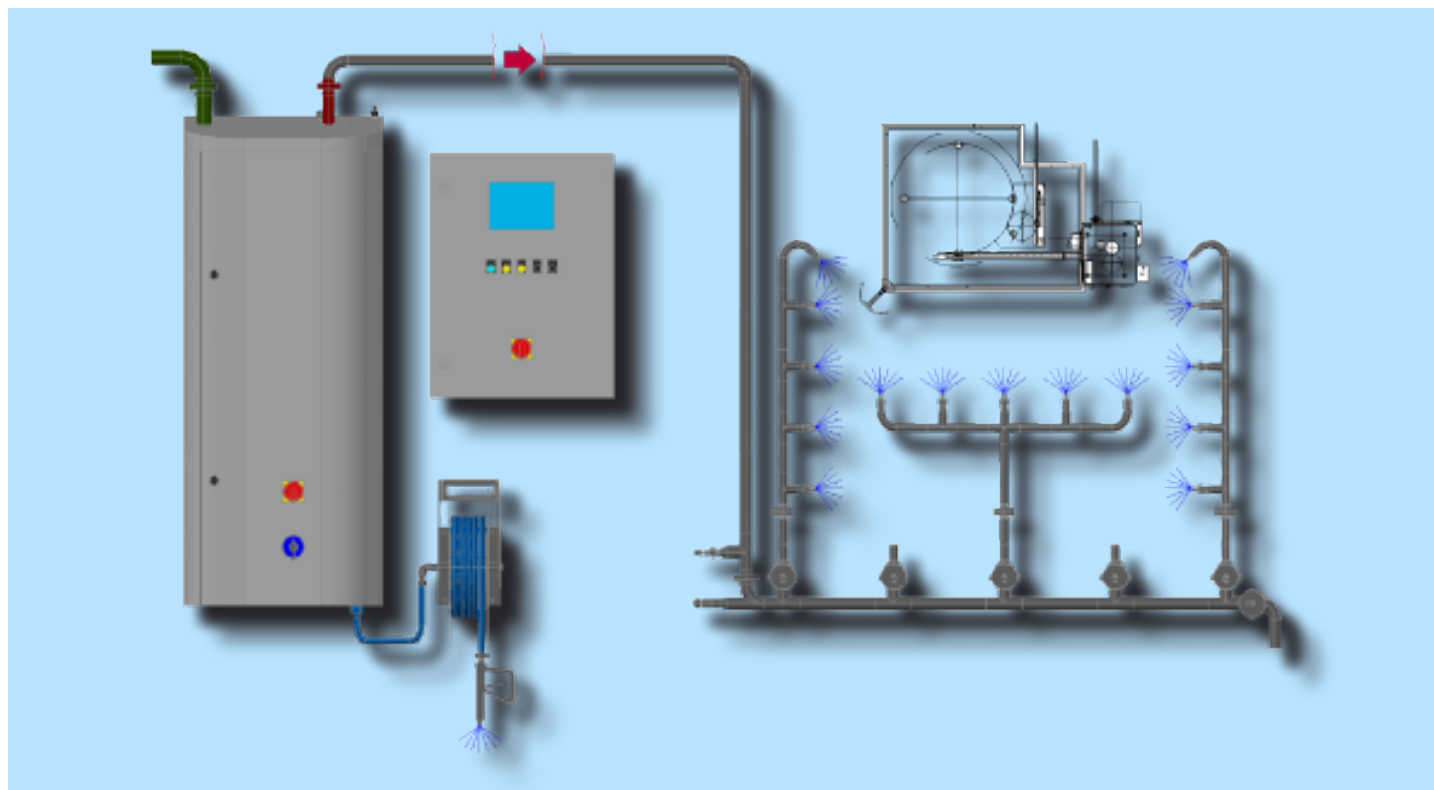
- automated, program controlled cleaning
- flushing, foaming, disinfection
- direct preselection of concentration
- easy handling
- definite concentration
- energy efficient technology
- “wide range injector”
- upgradeable module

Well balanced components, checked elements and our special expertise are the basis for a successful concept!

From engineering to commissioning – the **LOEHRKE** plant systems for exterior cleaning and disinfection assure our customers permanent and reliable hygiene results.



Concept automated equipment cleaning



Features of the LOEHRKE AFI System:

- low-maintenance pump
- precise cleaning by low pressure technology
- entire housing made in Hygienic Design
- robust selector switch made of stainless steel
- comprehensive range of accessories
- reassembled and ready for operation
- for wall fastening or base frame
- zur Wandmontage oder auf Edelstahlkonsole

Specifications AFI 9-12

Pump type: CRI 10-09

Water connection:

Water inlet: DN 50, min. 3 bar / 15 m³/h, 8-70 °C

Water outlet: DN 40, 12 m³/h

Air connection:

Air inlet: 10mm

Min. Pressure: 6 bar

Max. pressure: 10 bar

Air inlet: 450 NI/min

Technical data of injectors

(alkaline and acid product)

Concentration: 0-10 %

(depending on product , temperature , viscosity , density and compression ratio.)

Electrical specifications:

Voltage: 3~380-415 V,N

frequency: 50 Hz (optional 60Hz)

total power: 4 kW

Fuse: C16A

control voltage (PLC): 24 V (DC)

Dimension of unit:

width: ca. 650 mm

depth: ca. 400 mm

height: ca. 1600 mm